

MODEL NUMBER

ADC-AC-MR52

SPECIFICATIONS

INPUT POWER

12-24 VDC, 550 mA max

OUTPUT POWER

Pass-through or 12 VDC, 300 mA per reader

COMMUNICATION

2-Wire RS-485

INPUTS

Two dedicated reader inputs
 Eight programmable inputs
 One dedicated tamper input
 One dedicated power monitor input

OUTPUTS

Six relay outputs
 Normally open contact (NO): 5 A @ 30 VDC
 Normally closed contact (NC): 3 A @ 30 VDC

CERTIFICATIONS

UL 294 recognized
 CE compliant
 RoHS (2011/65/EU & 2015/863)
 FCC Part 15 Class A
 California Proposition 65
 NIST Certification

DIMENSIONS

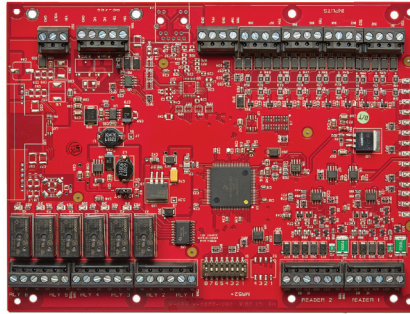
6.0 x 8.0 x 1.0" (152 x 203 x 25 mm)

TEMPERATURE

32 - 158 °F (0 - 70 °C) operational
 -67 - 185 °F (-55 - 85 °C) storage

OPERATING HUMIDITY

5-95% (non-condensing) RH



MR52 Two Reader Expansion Module

Alarm.com's Smarter Access Control is an ideal solution for businesses ranging from small shops to large commercial properties. The Two Reader Expansion Module is designed to add two extra readers to an Alarm.com Mercury Series door controller. Each ADC-AC-MR52 adds two reader ports, six relay outputs, and eight programmable inputs to the system. Connect the expansion module to the controller using a shielded, RS-485 twisted pair.

For larger commercial installations, Single and Two Reader Expansion Modules can be daisy-chained together.

Expansion Module Features

- Provides all I/O needed for two doors each using one reader
- Eight programmable inputs
- Two reader inputs
- Six relay outputs
- For use with Alarm.com Mercury Series Door Controllers

Smarter Access Control Benefits

- Scan-to-add card format and serial detection
- Control doors and manage users from the Alarm.com app
- Integrated Alarm.com intrusion and video offerings
- User-friendly, flexible scheduling
- Configure hardware using web or app for easy installation
- Plug & play installation — no networking expertise required



Developed with the Authentic Mercury open hardware platform